

CENIA STONE  
INMAR







Our Company has more than 35 years experience in working with CENIA STONE both in new constructions and restoration and conservation projects of buildings and architectural complexes like that of THE PRADO in Madrid, the HOTEL SHERATON MAUI in Hawaii or the SHOPPING CENTER ZOCO in Lebanon.

The INMAR group has 60.000 m<sup>2</sup> of land, including its own quarries, given over to working and transforming CENIA STONE in the town of Ulldecona (Tarragona) where ample reserves of the raw material are such that supply can always be guaranteed. INMAR projects throughout the world bear testament to its professional achievements

# OUR QUARRIES



Whether the need for raw material rises due to an increase in demand or the maintenance of completed projects, the INMAR group will have enough at its disposal thanks to the plentiful supply at its own quarries of Cenia Stone in Ulldecona, Tarragona province, Spain.

The quarries, which are subject to strict environmental controls, yield more than 18.000 m<sup>3</sup> of net Cenia Stone annually.





## THE PLANT



The more than 60.000 m<sup>2</sup> plant has an annual rate of production/capacity of 350.000 m<sup>2</sup> and is located in Vinaroz (Castellón), close to the AP7 motorway, 1km from exit 42 in Uldecona direction.

The plant employs the latest technological machinery for our high precision work including: block cutters, gang saws, polishers and buffers, flammers, bush hammers, edge polishers, aging and resin machines, and stone cladding lines





# CENIA STONE



Cenia Stone was formed in the Early Cretaceous Period. It falls into the type of limestone sedimentary rock recrystallized by metamorphosis and classified as marmol. Its technical properties make it suitable for indoor and outdoor use. It is a building material of extraordinary quality and is widely used ornamentally.

Unlike when many minerals are mined, in the extraction of natural stone, chemicals and other substances that could impact negatively on the environment are not used.





BEIGE CENIA



FLAMED



POLISHED



HONED



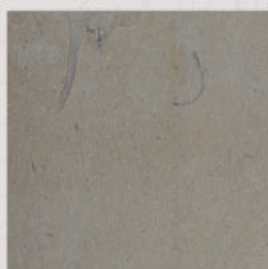
SANDBLASTED



BUSH HAMMERED



BUSH HAMMERED AND BRUSHED



GROUND



BRUSHED

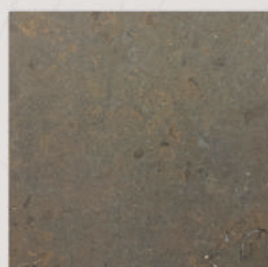


FLAMED AND BRUSHED

BLUE CENIA



FLAMED

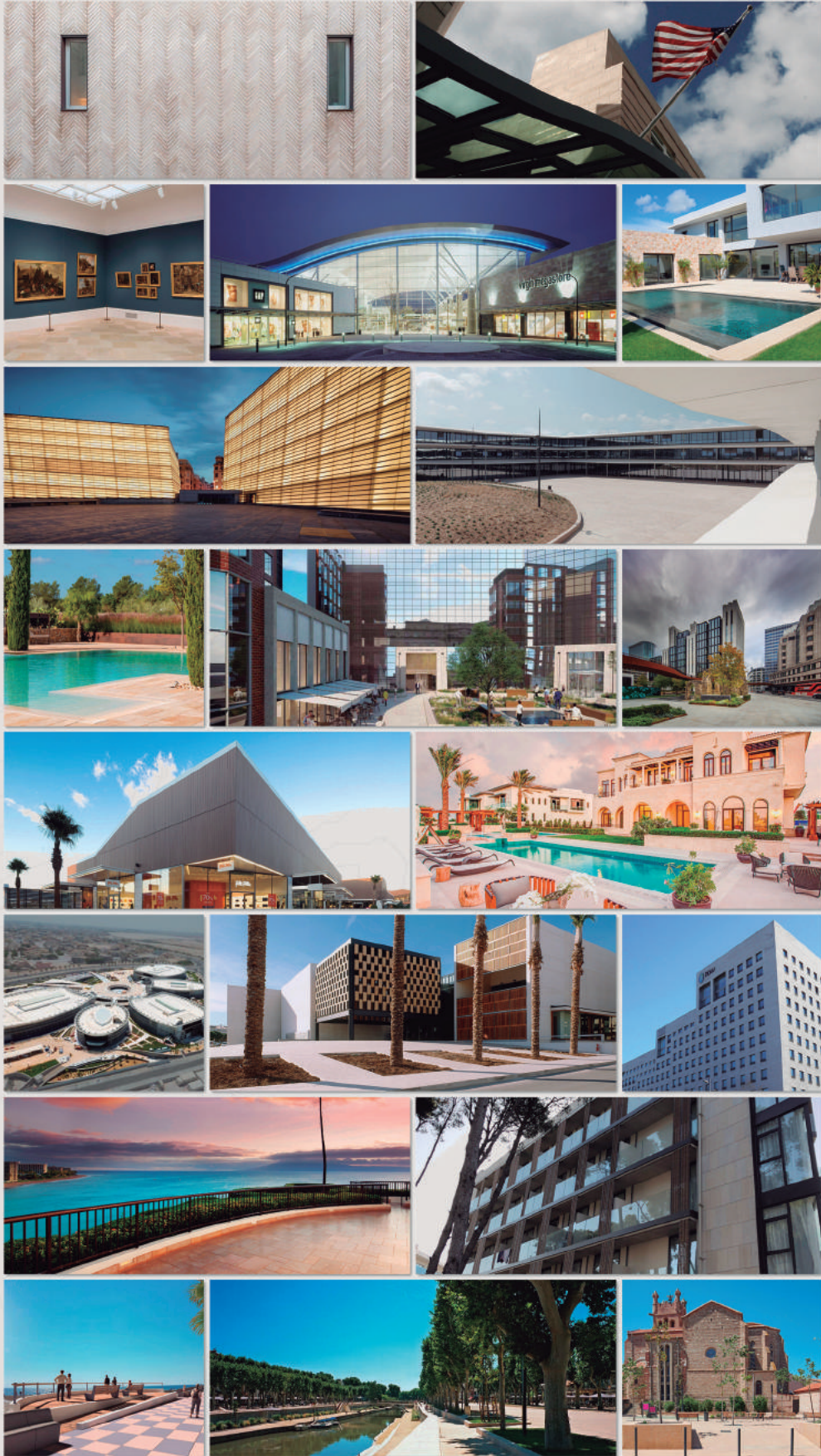


HONED



BRUSHED







# FEATURED PROJECTS

## SPAIN

Colonia Güell (Barcelona)  
 La Pedrera (Barcelona)  
 Girona Airport  
 T2 Terminal of Barcelona's Airport  
 "Camp Nou" Football Stadium (Barcelona)  
 Alcampo Shopping Center, Sant Boi (Barcelona)  
 Illa Diagonal (Barcelona)  
 Citadines Hotel, Rambles de Barcelona  
 Alcala de Henares Cathedral (Madrid)  
 Prado's Museum (Madrid)  
 Spanish Olympic Committee (Madrid)  
 Lilly Laboratories Alcobendas (Madrid)  
 Kursaal Congress Center (San Sebastian)  
 Antiguo Berri (San Sebastian)  
 Sevilla's Olympic Stadium  
 Ca Na Xica Hotel (Ibiza)  
 Remodelling of the Spanish Navy Promenade (Ceuta)

## EUROPE

Swiss Bank Corporation, Basel (Switzerland)  
 Nestle Building, Vevey (Switzerland)  
 Ginebra's City Hall (Switzerland)  
 Midsummer Place Shopping Center, Londres (UK)  
 Stade de France, Saint Denisse (France)  
 Fleury d'Aude Paving (France)  
 Maritime Walk, Toulon (France)  
 Aménagement des Barques, Narbonne (France)  
 Marseille Rues Opera (France)  
 Biarritz Casino (France)  
 B.N.P Louveciennes (France)  
 Savoy Hotel in Cannes (France)  
 Lecrerc Shopping Mall in Paris (France)  
 Paul Sabatier University, Toulouse (France)  
 American Embassy in Berlin (Germany)  
 Rabobank building (Netherlands)  
 Streets of Monaco

## UNITED STATES

Helen and Martin Kimmel University Center, New York (USA)  
 "Con Edison" Building, New York (USA)  
 St. Patrick's Cathedral, New York (USA)  
 Kings Country Court House, San Leandro, CA (USA)  
 Sheraton Hotel, Maui (USA)

## MIDDLE EAST

Al Ain University, Abu Dhabi (UAE)  
 Supreme Educational Council Headquarter, Doha (Qatar)  
 Beirut Souks Shopping Center, Beirut (Lebanon)  
 Alnakhil Palace, Jedadhh (Saudi Arabia)  
 Dubai Hills, Dubai (UAE)

## AFRICA

Hilton Hotel, Dakar (Senegal)  
 Ahmed Bey Square, Constantine (Algerie)  
 Real Palace, Fez (Morocco)

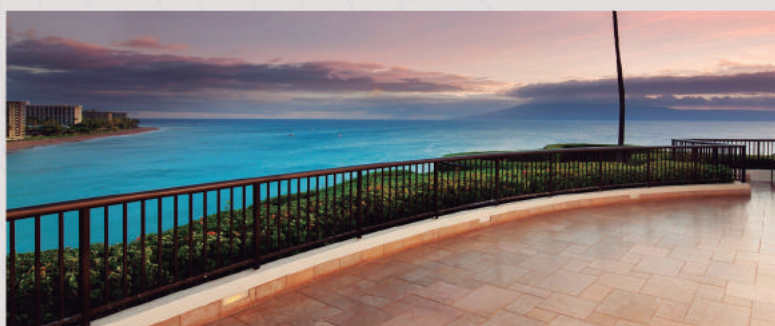


# SHERATON HOTEL

Hawaii (USA)

The architectonic design for the Hotel Sheraton of Maui was so spectacular it was shown in New York's MOMA (Museum of Modern Art) and was a turning point in the architecture of the time. When it was renovated, Cenia Stone was chosen as a symbol of quality to uphold the high standards employed in the initial construction of the 503-room hotel.

Despite the distances and challenges involved our Company proved efficient in providing all the Cenia Stone needed for the Project.



## PROJECT FILE

Product: Beige Cenia

Finish: Flamed

Surface: 5000 m<sup>2</sup>

Architect: Architects Hawaii Limited





# SOUTH SOUKS

Beirut (LEBANON)

Reconstruction began in 1991 after the historic central area of Beirut (Lebanon), known as Beirut souq was destroyed in the Lebanese Civil War (1973-1990). Part of the project which Spanish architect Rafael Moneo put forward for the Hellenistic commercial hub involved keeping the network of streets and their original names. And so was born South Souks in 2009, an achievement which earned Moneo the Pritzker prize.

Given the scale of the souks, and their central function, interweaving as they do different quarters of the city, they are much more than a number of buildings and streets. They were always the beating heart of Beirut and have become so once again thanks to this project, healing in the process the deep wounds inflicted by the war. The full value of what has been done will be fully appreciated in the future.



## PROJECT FILE

Product: Beige Cenia  
Finish: Ground and honed  
Architect: Rafael Moneo





# AMERICAN EMBASSY

Berlin (GERMANY)

The design and building materials for the new United States Embassy in Berlin were very carefully chosen by the prestigious designers “ Moore Ruble and Yudell Architects & Planners” of California, to give a secure yet open image of the country.

To this end, honed finish Cenia Stone was found to provide just the effect they were looking for. The new embassy is a sound, functional base for the administration’s diplomatic work.



## PROJECT FILE

Product: Beige Cenia

Finish: Honed

Architect: Moore Ruble Yudell





# LONDON WALL PLACE

London (UNITED KINGDOM)

The renowned firm MAKE ARCHITECTS embarked on this landmark project in the heart of London's business district. The name, WALL, evokes the ancient defenses built around London, or Londinium as it was then, by the Romans. LONDON WALL PLACE consists of office buildings and a large expanse of gardens.

MAKE ARCHITECTS chose Blue Cenia Stone, in a flamed finish, for entrances and gardens. A notable feature of the buildings is the raised gardens in which the grey tone of the Cenia Stone brings out the colour of the plant life.



## PROJECT FILE

Product: Blue Cenia

Finish: Flamed

Architect: Make Architects





# THE STYLE OUTLETS

Viladecans (SPAIN)

THE STYLE OUTLETS shopping centre was built on nearly 7 hectares of trapezoidal shaped land in Viladecans, Barcelona, and has two main Access points. When approaching along the C-32 motorway the unusual design of the large entrance can be seen. Exiting the motorway takes the visitor through the entrance gates and to the shopping centre. The northern access point is connected to the town of Viladecans and leads into a large space open to the public at the highest level of the complex.

The feeling of urban streets is what was aimed for, with the awnings of the business premises offering shade. The architecture is contemporary, natural and warm. It is uniform, when viewed from the outside, fragmented into dimensions that resemble the centres of small towns on the inside. These features attempt to connect it with the design and modernity of Barcelona, as does the use of Beige Cenia Stone with a flamed finish for all the outdoor paving.



## PROJECT FILE

Product: Beige Cenia

Finish: Flamed

Surface: 4000 m<sup>2</sup>

Architect: Batlle i Roig Arquitectes



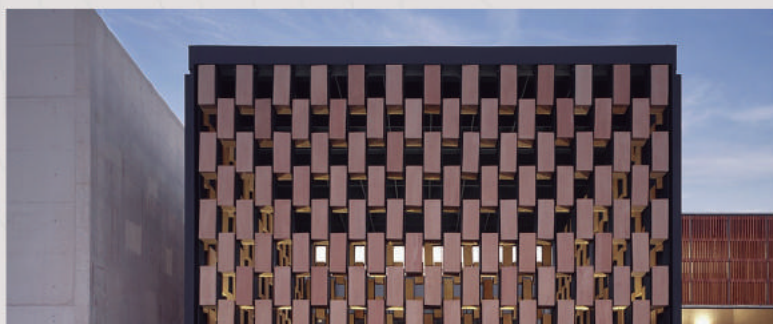


# PALACIO DE CONGRESOS

Peñíscola (SPAIN)

This Project has been defined by its situation, at the feet of Peñíscola's castle and opposite a garden just set back from the seafront. The decision was to link the indoor spaces to the park and views of the sea and give the entrance from the gardens an open feel, with a covered walkway providing the transition from outside to inside spaces.

It has been built with three-dimensional pieces of ceramic suspended from a metal structure that filters the light. The hallway gives way to the main hall, exhibition rooms and conference halls. The structure of the exposed concrete roof provides for the acoustic conditions, which are balanced out by the lateral timber slats.



## PROJECT FILE

Product: Beige Cenia

Finish: Ground

Architect: Ángela García de Paredes and  
Ignacio G. Pedrosa



# KURSAAL

## San Sebastián (SPAIN)

It would not be an overstatement to say that the mouth of the River Urumea (San Sebastián, Spain) was the inspiration behind this work of architecture.

Its designer turned his back on the obvious option of merely extending the urban reach of Zurriola Avenue and sought to reflect the character of the land itself and its particular geographical features.

Out of this came two glass cubes, abstract masses in which to take in and hold all manner of events, part of the landscape, acutely aware of Mounts Urgull and Uría: like two gigantic beached rocks bowing down to the geography, each with a nod to those two imposing hills. It has to be mentioned that, for different reasons, the work is indebted to the Sydney opera house on the one hand and the work of sculptor Jorge Oteiza on the other.



### PROJECT FILE

Product: Beige Cenia

Finish: Honed

Architect: Rafael Moneo





# LYCÉE ERNEST-FERROUL

Lézignan (FRANCE)

The Ernest-Ferroul secondary school was built to meet the pressing need for provision in the región at the time. It opened in 2016, designed by a team of architects headed by Rudy Ricciotti (Bandol) y Passelac Roques (Coursan) in conjunction with the OTCE department.

Its location and capacity of 1,400 students has made it a cornerstone centre in the region of Lézignanais, Corbières y Minervois, where both general education and technology are taught. Notably it relies 100% on renewable energy



## PROJECT FILE

Product: Beige Cenia

Finish: Flamed

Surface: 4000 m<sup>2</sup>

Architect: Rudy Ricciotti and Passelac Roques



CENIA STONE  
**INMAR**

CTRA. VINARÒS-ULLDECONA KM 10,7

12500 VINARÒS (CASTELLÓN) SPAIN

P.O.BOX 427

PHONE : 0034 977 720 403

PIEDRACENIA.COM

CLIENTS:

INMAR@PIEDRACENIA.COM

SUPPLIES AND INFORMATION:

PIEDRACENIA@PIEDRACENIA.COM